

Epinephrine Auto-Injectors

Stock Epinephrine Requirements for
California Schools
Senate Bill SB1266



California School
Nurses Organization

Training Session Objectives

- Describe elements of SB 1266 and training requirements;
- Define anaphylaxis and recognize the signs & symptoms;
- Describe acquisition, storage & maintenance of epinephrine;
- Identify emergency follow-up and documentation procedures; and
- Demonstrate the use of an epinephrine auto-injector.

SB 1266 Requirements

1. Required for school districts, COE's and charter schools.
2. Permissive for private schools.
3. Requires a qualified supervisor of health or a school district/COE/Charter school administrator to obtain a prescription for an epinephrine auto-injector. (EC4119.2 (e)(1)).
4. Maintain epi-pen records.
5. Mandates that school district/COE training standards align with CDE training standard recommendations. (EC4119.2 (g)(1,2)).

Prescription

- Qualified supervisor of health or administrator shall obtain a prescription (49414 (g) (1) (2), preferably with refills available.
- Physician and or surgeon provides a written order. (49414 (g) (1))
- Orders are furnished exclusively for use at a school district site, COE or charter school. 4119.2 (1)
- Order must specify quantity and type (Jr. v Adult) of auto injector 4119.2 (2)
- May be filled by a pharmacy or mail order. 4119.2 (a)
- EAI must be restocked within 2 weeks after use.

Records

Maintain Records regarding (4119.2(2)(b)

- The acquisition, disposition and epinephrine auto-injectors (EAI) furnished.
- Monitor supply and ensure destruction of expired (EAI).
- Records must be maintained for 3 years.

Who May Provide Epi Pen Auto Injector Training

- The School Nurse (49414(5)(e))
- Other qualified person designated by an authorized physician and surgeon (49414(5)(e))

Training

Training Requirements (49414.2):

- Techniques to recognize S & S of anaphylaxis
- Standards and procedures for storage, restocking, and emergency use of EAI
- Recommendations for CPR certification
- Emergency follow-up procedures
 - Call 911
 - Notify parent and physician
 - Complete EAI administration report
- Decision on using adult or junior EAI
 - 66 lbs (about 3rd grade)
 - When in doubt administer adult dose

Training

Training Requirements (49414.2) Cont:

- Provide written materials that support the training information.
- Volunteers must receive initial and annual refresher training
- Standards on the storage and emergency use of EAI
- Training must be provided by school nurse or other qualified person designated by the physician or surgeon.

Notification

- Schools shall annually distribute notice for volunteers (49414.2 (f))
 - To be trained to administer an EAI in the event anaphylaxis (49414.2 (f) (1))
 - Districts must provide description of the training (2)
- Volunteers will receive and be provided with defense and written indemnification for any civil liability
 - Notification shall be placed in the volunteer's personnel file.

Funding

- May accept gifts, grants or donations to support EAI implementation

Training Standards for Epinephrine Auto Injectors (EAI)



California School
Nurses Organization

What is Anaphylaxis?

- Anaphylaxis is a severe and potentially life-threatening allergic reaction which can occur within seconds or minutes of encountering an allergic trigger.

**ANAPHYLAXIS IS ALWAYS A
MEDICAL EMERGENCY**

Causes include....

- Insect sting
- Food allergy
- Drug reaction
- Latex
- Exercise (rare)
- Unknown



Acclaim Images.com

Signs and Symptoms

- Hives
- Itching
- Skin redness
- Swelling of the tongue or lips
- Throat tightening
- Breathing difficulty
- Wheezing or coughing
- Difficulty swallowing
- Stomach cramps or vomiting or diarrhea
- Dizziness
- Feeling faint/drop in blood pressure (if only this one symptom it is still anaphylaxis)
- Impending doom feeling

How to Recognize Anaphylaxis



EYES

Redness
Puffiness

NOSE AND MOUTH

Tongue swelling
Metallic taste in mouth

STOMACH

Feeling/being sick
Stomach cramps

SKIN

Flushing (redness)
Hives (itchy red spots)

HEAD

Sense of impending doom

HEART

Weakness
Fainting

LUNGS AND THROAT

Difficulty getting air
in and out
Repeated coughing
Tight chest
Wheezing
Difficulty breathing
Swelling of the throat
(itching of the throat,
hoarseness, change in
voice, choking)

SIX THAT SAVE LIVES

1

The Symptoms

Signs of a serious food allergy reaction – known as anaphylaxis – are 2 or more of the following after eating a suspect food:

- Hives, itching and/or skin redness
- Swelling of the tongue, lips or throat
- Breathing difficulty, wheezing or coughing
- Stomach cramps or vomiting or diarrhea
- Feeling faint / drop in blood pressure (If only this 1 symptom, it is still anaphylaxis.)



4

Go to the Hospital

A person who had an emergency epinephrine shot must be taken to hospital for observation. During transport, IF symptoms have not improved within 10 to 15 minutes, a second auto-injection should be given.

2

**In Anaphylaxis:
Use the auto-injector right away. Call 911 and report a food allergy emergency.**

Epinephrine shots are given via the auto-injector to the outer thigh muscle. This is considered a very safe drug. Antihistamines are acceptable as secondary medication only. They won't halt anaphylaxis. Allergists say: err on the side of using the auto-injector.

3

Time is of the Essence

In studies of those who have died of anaphylaxis, they did not receive an epinephrine injection, or they got it too late, after a reaction had progressed. In anaphylaxis, prompt use of the shot is always essential.



5

Reclining is Best

During the ambulance ride, the person having the serious reaction should be lying down, with the legs raised (this improves blood flow). NIAID guidelines recommend the patient receive oxygen and IV fluid.

6

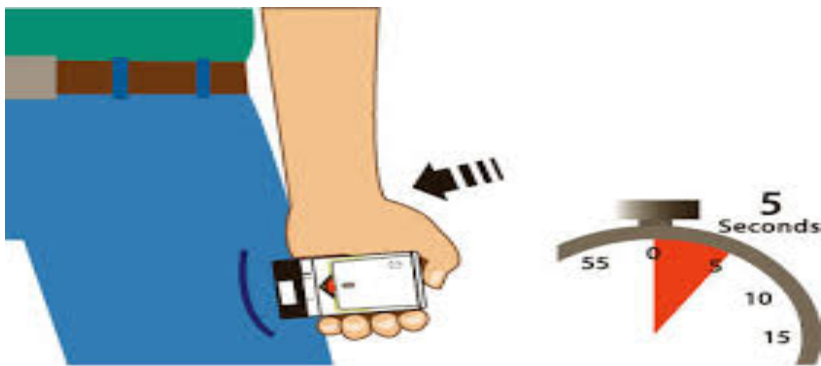
Don't Go It Alone

No person should be expected to be fully responsible for self-administration of an epinephrine auto-injector. Assistance during anaphylaxis is crucial.

Epinephrine administration is the first line of treatment for Anaphylaxis

Epinephrine Auto-Injector:

- Is a disposable drug delivery system
- Has a spring-activated needle
- Is used for emergency administration of epinephrine.



When to Give Epinephrine Auto-Injector

Once there are signs or
symptoms of anaphylaxis

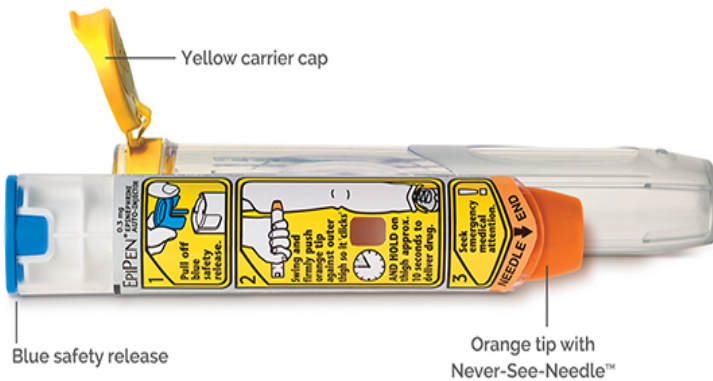
Who Can Administer?

- A school nurse or a trained volunteer may administer epinephrine auto-injectors Section 2. 49414 (h)
- Volunteers should also be certified in CPR (EC 49414.2 (D))



How to Choose Adult or Junior Dose of Epinephrine

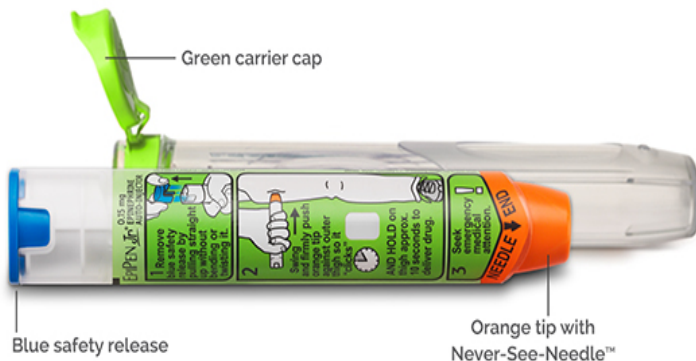
EpiPen Auto-Injector 0.3mg (yellow label) removed from carrier tube



Adult: Yellow package.
Use for persons weighing 30kg. (66 lbs. or more)

IF IN DOUBT—GIVE ADULT DOSE

EpiPen Jr Auto-Injector 0.15mg (green label) removed from carrier tube



Junior: Green package.
Use for persons weighing less than 30kg. (less than 66 pounds) about 3rd grade

Action Steps for Anaphylaxis

1. Recognize signs or symptoms of anaphylaxis—if in doubt give epinephrine
2. Give epinephrine auto-injector in either outer aspect of the thigh
3. Call 911
4. If the person stops breathing start CPR
4. Stay with victim
5. Cover with blanket
6. Elevate legs if the person starts to get pale
7. If signs or symptoms do not resolve within 5–10 minutes give additional epinephrine dose.



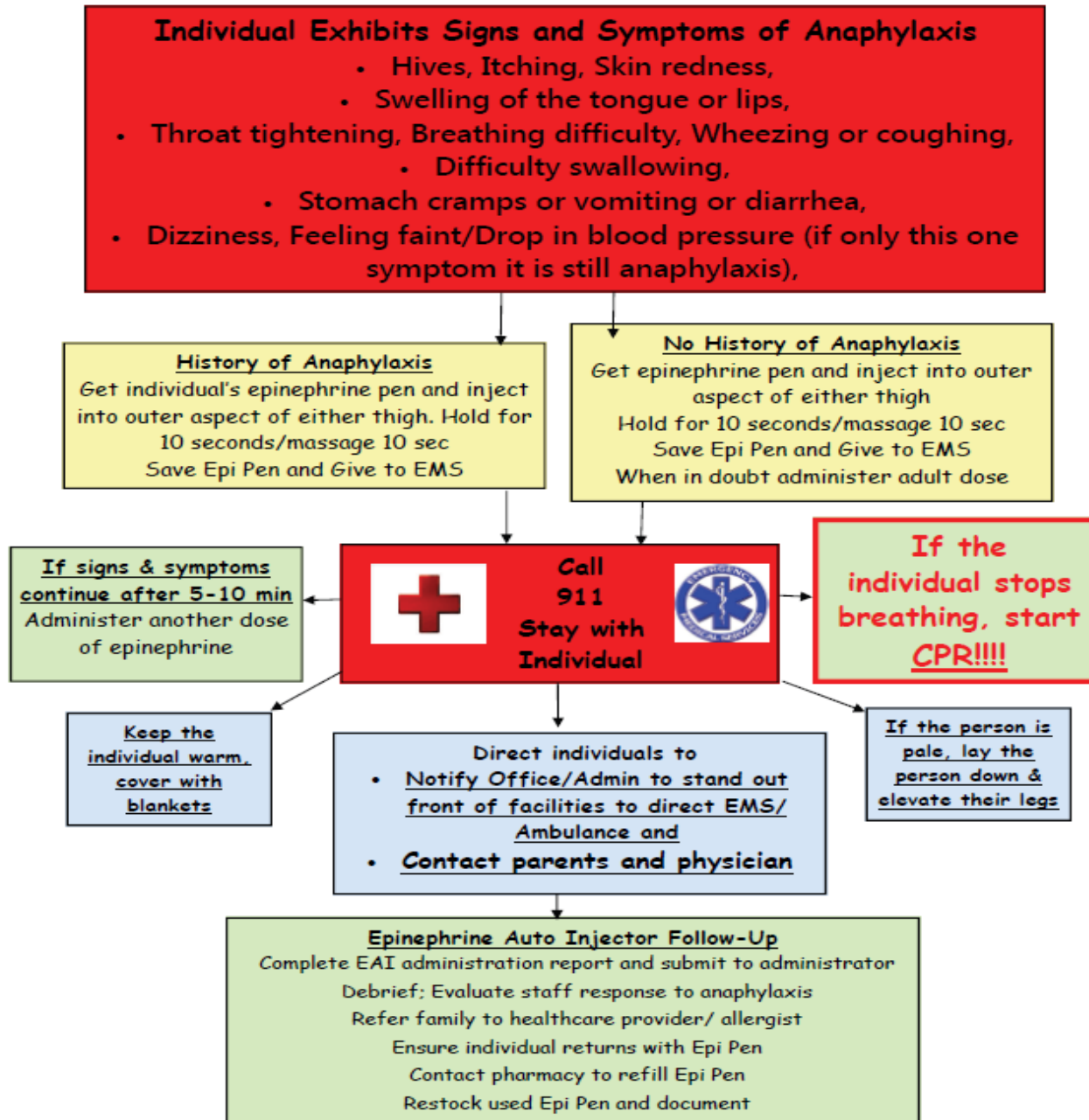
What is Anaphylaxis?

How to Give Epinephrine Auto-Injector

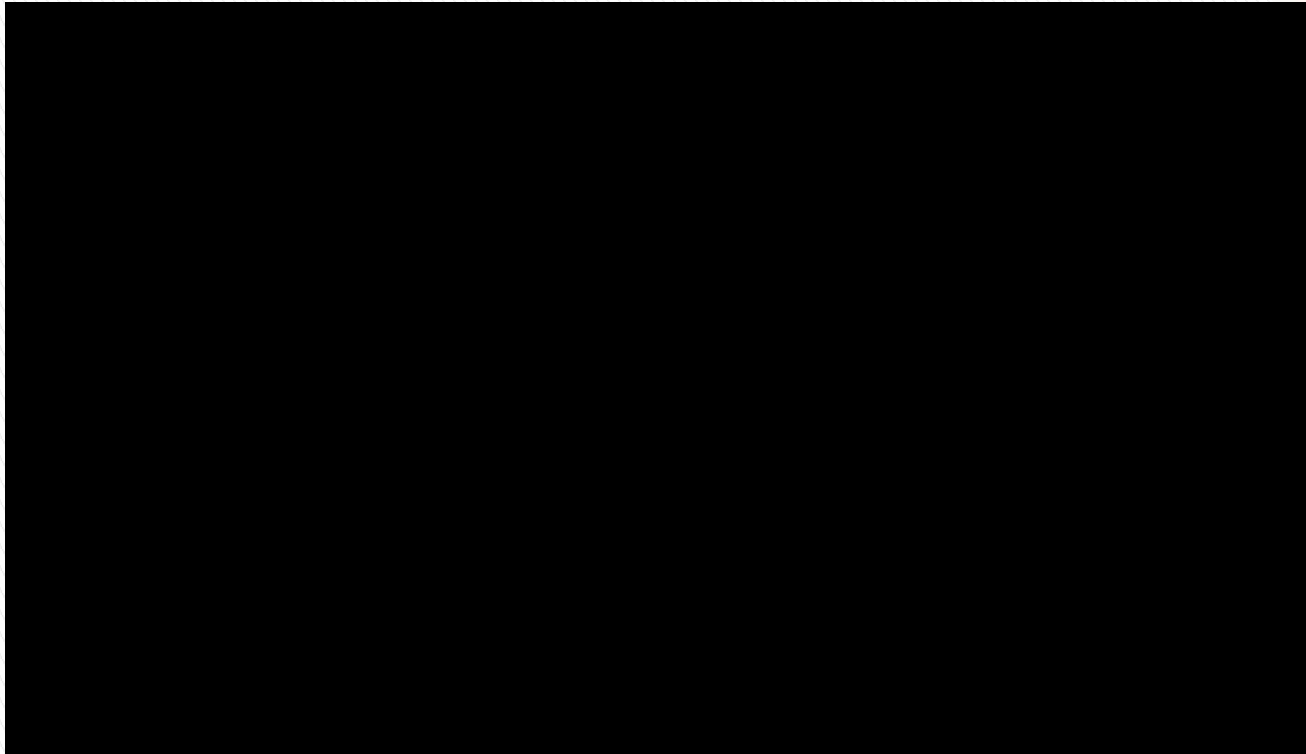
- Remove auto-injector from container
- Pull off the safety cap
- Swing and firmly push needle tip against mid-outer thigh
- Push injector into thigh until you hear or feel the “click”
- Hold in place 10 seconds
- Remove injector and massage the area for 10 seconds
- Keep until emergency medical personnel arrive.
- Give expended device to EMS personnel or discard in sharps container



Epi Pen Auto Injector Algorithm



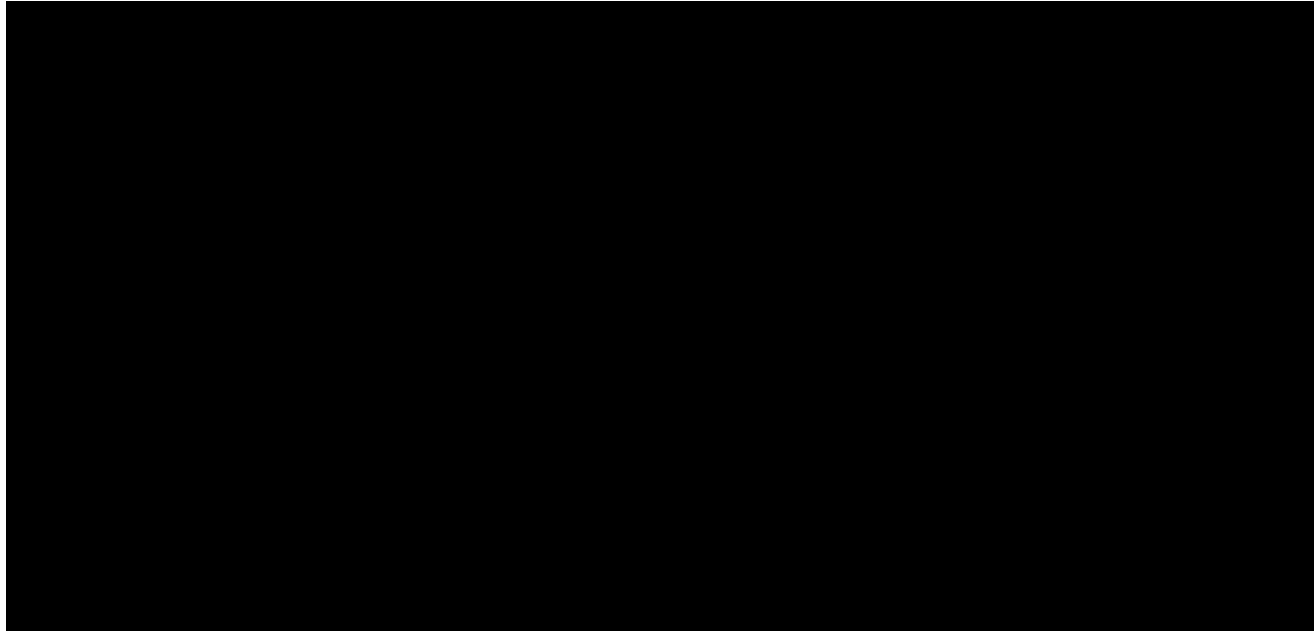
Epi-pen video



If the video does not start after clicking on it, please cut and paste the following link to your browser

<http://www.bing.com/videos/search?q=how+to+use+an+epipen&qpvf=how+to+use+an+epi+pen&FORM=VDRE#view=detail&mid=F25F835D5671DC4ABD37F25F835D5671DC4ABD37>

Auvi-Q Epinephrine auto-injector



View the Auvi-Q demonstration video:
If the video will not start in Power Point, please cut and paste this
link to your browser:

<https://www.youtube.com/watch?v=bZl5vXwZUOg>

Side Effects of Epinephrine

- Anxious feeling
- Fast heartbeat
- Nausea
- Headache
- Pale
- Shaky

- Let the person know these are common side effects and will go away.
- Remain calm.
- Provide reassurance.

Emergency 911 Protocols After Administering Epinephrine

Call

- Call 911
- Report anaphylaxis event and time epinephrine given
- Stay on phone until all questions are answered

Report

- Give exact location of victim & nearest room
- Inform office of event and 911 call; name of victim

Notify

- Parents
- Physician

Emergency 911 Protocols (cont.)

Stay

- Stay with person until EMS arrives
- Keep person upright if having trouble breathing
- Lay person down with feet elevated if pale
- Roll to side if vomiting

Be Ready

- Give 2nd dose of EAI (from twin pack) in 5-10 minutes if symptoms do not improve
- Start CPR if breathing stops

Emergency 911 Protocols (cont.)

Follow Up

- Complete EAI administration report and submit to administrator
- Debrief; Evaluate staff response to anaphylaxis
- Refer family to healthcare provider/allergist
- Ensure individual returns with Epi pen
- Contact pharmacy to refill Epi pen
- Restock used Epi pen and document

Acquisition and Maintenance of Epinephrine auto-injectors

- Identify staff person who will be responsible for epinephrine auto injector oversight
- Order epinephrine auto-injectors prior to the beginning of school
- Document the date, number and type of auto injectors, lot number and expiration dates of auto-injectors received
- Place in secure, well-marked location (not locked)
- Replace auto-injectors within 2 weeks of use

Storage and Stocking of Epinephrine



NEVER LOCK UP EPINEPHRINE AUTO INJECTORS!

Store:

- At room temperature
- Secure, but accessible, well-marked location

Avoid:

- Extreme heat or cold
- Direct sunlight

Epipen4Schools© Program

- Receive free epinephrine auto-injectors (4 per site; 2 junior, 2 adult) through Mylan Specialty via BioRidge Pharma, LLC
- Schools must provide a prescription for stock epinephrine from a physician and submit with the request for epinephrine.
- To obtain a certification/application for epinephrine call (973)845-7600 Attn: Kristina Paich, BioRidge Pharma, LLC
- Completed certification forms and a copy of a valid EpiPen auto-injector prescription can be emailed to: info@bioridgepharma.com

Auvi-Q free Epinephrine auto-injectors

- Free Auvi-Q epinephrine auto-injectors may be available to your school
- Contact Auvi-Q at www.auvi-q.com

Resources

- American Academy of Allergy, Asthma and Immunology (AAAAI)
- American Academy of Pediatrics (AAP)
- California Department of Education
- California Department of Public Health
- California Medical Association (CMA)
- California School Nurses Organization (CSNO)
- Emergency Medical Systems Authority (EMSA)
- Food Allergy Research and Education
- National Association of School Nurses
- CPR training:
 - American Heart Association
 - American Red Cross

Questions?

Visit the CSNO website @ csno.org
for more information